

Check and challenge

Cells and systems



Check

Sizing up cells

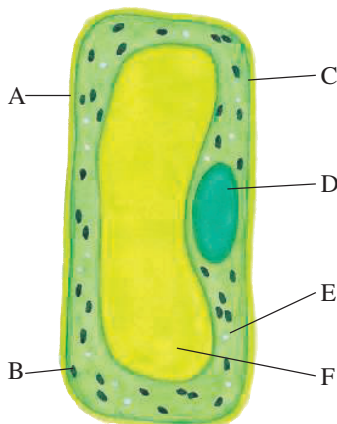
- Cells are described as the building blocks of life. Why is this a good description?
- Draw a labelled set of diagrams to show how to make a wet mount and how to stain cells.
- What magnification does a 10× eyepiece used with a 10× objective lens in a microscope give?
- Why is a microscope needed to see cells and the parts inside them?
- Copy and complete: The lens of a microscope that is closest to the object that you are looking at is called the _____ lens.

The structure of cells

- Copy this table and complete the first column by referring to the diagram in question 7 and inserting the correct label (A, B, C, D, E or F) next to each feature in the table. Use the third column to briefly describe the main job done by each feature.

Correct label	Cell feature	Main job done by feature
	Cell wall	
	Cytoplasm	
	Vacuole	
	Chloroplast	
	Cell membrane	
	Nucleus	

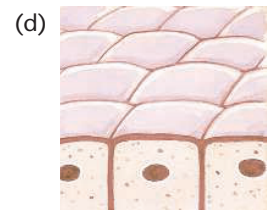
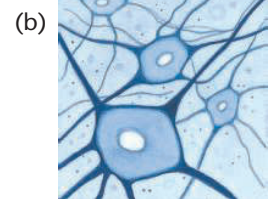
- Is the cell shown at right a plant cell or an animal cell? State three reasons for your answer.



- Draw an animal cell and a plant cell, showing and labelling the parts that can be seen with a normal school microscope.

The function of cells

- Copy and complete the table below. Identify each of the human cell types shown below. Describe the job done by each cell type and explain the reason for its shape.



Cell type	Name of cell type	Job and reason for shape
Type A		
Type B		
Type C		
Type D		

- Cells like the ones shown below can be found in your windpipe.

- What are the hair-like structures on the cells and what do they do?
- Name one other place in your body where you might find cells with these structures.

